

West Central Wisconsin Regional Planning Commission

NEWSLETTER

JANUARY 2014

West Central Wisconsin Regional Planning Commission

Serving the Counties

of:

Barron

Chippewa

Clark

Dunn

Eau Claire

Polk

St. Croix

[Join Our Mailing List!](#)

WCWRPC STAFF

Jay Tappen
Eric Anderson
Jing Duan
Tobi LeMahieu
Jennifer Ludwig
Esther Moen
Lynn Nelson
Lisa Ruth
Ann Schell
Chris Straight

Director's Message

After forty-five years in the workforce, the last twenty-three of which were with the Commission, I have determined I have planned and invested adequately to retire this year. My last day with the Commission will be Friday, April 18, 2014. I have very much enjoyed working for the Commission and appreciate all of the relationships I have developed in the region over the years.

I think it is those relationships built over the years by all Commission staff that makes our organization a strong partner with county supervisors and county staff, community elected officials and staff, state and federal agencies, economic and workforce development groups, universities and technical colleges, as well as, businesses, financial institutions, and special interests. It is our understanding of and association with these diverse stakeholders that underlies our commitment to the region.

Because of our unique status as a special purpose unit of government, with specific responsibilities set forth by statute and closely affiliated with our member counties, we can maintain these long standing connections and be responsive to the ever changing needs of the region. We stand ready to fulfill our role as a leader in the responsible planning and development of the region through coordination, partnerships, advocacy and service.

Over the next few months I look forward to working with the Commission Executive Committee and our staff to ensure continuation of the excellence you have grown to expect from us as we transition to a new director. Our capacity, expertise and availability are the foundation of our benefit to you as your partner in fulfilling your mission.

Thank you for the support you have shown me over the years and for your continued support of the WCWRPC.

Jay B. Tappen
Executive Director

Levi Wagner
Beth Waldhart
Kim Zimmerman

Chippewa County Assists CRI with Expansion

In February of 2013 Chippewa County was awarded \$456,000 in Community Development Block Grant (CDBG) Public Facility (PF) funds to assist Chippewa River Industries, Inc. (CRI) with an expansion project. CRI is located in Chippewa Falls and is a



nonprofit organization that offers packaging, assembly, and other services to businesses, while providing vocational programs for individuals with disabilities and other barriers to employment. Organizational growth in employment and services within the organization had created a need for more space and thus the initiation of the project.

The project was divided into the following two phases:

- Phase I: Purchase and build out of a spec building located at 2551 Hamilton Avenue (across the street from the existing CRI facility).
- Phase II: Construction of a warehouse at 1000 Lake Wissota Drive (adjoining the CRI existing facility).

CDBG-PF funds were passed through from the Wisconsin Department of Administration to Chippewa County, and then to CRI, to assist with Phase I. CRI will be utilizing Rural Development loan funds for Phase II. As shown in the CRI provided photo, Phase I was completed last fall with an open house christening the building on October 17, 2013. Phase II is currently in the planning stages with construction anticipated to commence in the spring.

WCWRPC was an active partner in the project preparing the CDBG application and administering the CDBG-PF funding on behalf of Chippewa County and CRI. For additional information on the CDBG Public Facility program, or other types of community development funding, please contact [Lynn Nelson](#)

or [Tobi LeMahieu](#).

Momentum West Establishes Economic Development Committee

A new Economic Development Committee was established by the Momentum West board of directors during the December regular meeting. The committee is part of a 2014 effort to more actively engage Momentum West stakeholders across the region and maximize the impact of the organization using volunteer talents and resources. Momentum West board member Lynn Nelson of the West Central Wisconsin Regional Planning Commission was appointed chair of the committee.

A formative meeting for the committee was held on Thursday, December 19th. Early on the committee will focus on three primary projects which include managing the ROI business attraction and appointment process, planning for the two international trade shows that Momentum West will be attending, and development of a small site designation program. A subcommittee was formed around each of the three primary projects with each of the subcommittees setting up meetings currently or in the near future.

If you are interested in serving on the Economic Development Committee and/or one of the subcommittees your participation is welcome. To get involved contact [Lynn Nelson](#) or [Russ Korpela](#).

Woodville Builds on Local Heritage and Partnerships to Enhance Downtown

Downtown Woodville, with its commercial district, community buildings, and parks, is at the historic heart of the community. To bring more visitors and residents downtown and obtain public input on future downtown improvements, the Village reached out to WCWRPC to conduct a downtown placemaking exercise.

Placemaking transcends the "place" and brings the "making" to the forefront. It is about people making their community a better place. During the three-hour workshop, those who work, live, and play in Downtown Woodville assessed their downtown area. Residents then identified short-term and longer-term opportunities to improve their downtown, as well as potential resources.

Community members highlighted the need to enhance the entrances to their downtown and the importance of strengthening linkages between destinations within their community. Recommendations to improve downtown aesthetics and comfort were identified, such as adding seating, façade improvements, pavement treatments, and celebrating the community's strong Norwegian heritage. And during both the workshop and a follow-up meeting in December, partnerships were identified which are critical to the successful implementation of the placemaking recommendations. The Village also asked WCWRPC to develop graphic renderings which reflect the placemaking recommendations for three key locations identified during the project, such as the Pioneer Building/Senior Center shown below. To maintain positive momentum, the Village has established a visioning group to move forward with coordinating their placemaking plan. To see a copy of the full plan, click [here](#).

Before



After



WCWRPC can adapt the placemaking model to different scales and circumstances, such as the recently completed 1.5-acre Haymarket Plaza project in downtown Eau Claire or the privately-owned 40-acre River Prairie multi-use project in Altoona. Please contact Chris Straight, Senior Planner, at chris@wcwrpc.org for more information on how placemaking

could work in your community.

Safe Drinking Water Loan Program

WCWRPC is currently administering a Safe Drinking Water Loan Program (SDWLP) loan through the Wisconsin Department of Natural Resources (WDNR) for the City of Greenwood. Through the SDWLP, the City is accomplishing two things: 1) repair of their existing 350,000 gallon in-ground water storage reservoir to improve disinfection of drinking water from their two well fields, and 2) construction of new wells that will connect to the transmission main.

The SDWLP provides financial assistance to public water systems to build, upgrade, or replace water supply infrastructure to protect public health and address federal and state safe drinking water requirements. For eligibility, deadlines, and more information [click here](#) to see the WDNR website.

If you have questions about infrastructure funding (SDWLP or other funding programs), need assistance in preparing applications, or help with administration, please contact [Lynn Nelson](#).

Brownfields Funding Available

The Wisconsin Brownfields Coalition (WBC) was created in 2003 in order to obtain federal funding from the Environmental Protection Agency (EPA) for brownfields cleanup. Current members include the DNR and Wisconsin's nine Regional Planning Commissions. Revolving Loan Funds that are awarded to the WBC are managed by the DNR through the Wisconsin Ready for Reuse Loan and Grant Program. Coalition Assessment Grants that are awarded to the WBC are managed by the DNR through the Wisconsin Assessment Monies program.

The Ready for Reuse Program has two different types of funding currently available: the Hazardous Substance Loans and Grants and the Petroleum Loans and Grants. Ready for Reuse loans and grants are used for environmental cleanup of hazardous substances or petroleum at brownfields throughout Wisconsin.

The Wisconsin Assessment Monies program funds Contractor Services Awards which are given to businesses or local governments for no-cost Phase I and Phase II Environmental Site Assessments and/or limited NR 716 site Investigations. Eligible sites are closed or closing manufacturing and industrial sites, such as foundries, electroplaters, assembly lines, and other industrial facilities. There is no match or grant administration required of the applicant.

These funding sources for brownfield remediation are still available. If you need help assessing potential projects in your community, please call Jay Tappen at 715-836-2918 or Jenna Soyer at 608-267-0543.

Ray Hughes Retires from RBF, Inc. Board of Directors

Ray Hughes retired from the Regional Business Fund, Inc. (RBF, Inc.) Board of Directors in December 2013 after almost 20 years of esteemed service. Ray was appointed as an at large member to the Board in 1995, the same year the corporation was established. During his time on the RBF, Inc. Board, Ray presided over many developments within the corporation, the most prominent of which was the consolidation of over 30 municipal Community Development Block Grant funded Revolving Loan funds in west central Wisconsin. He was appointed as the Eau Claire County representative in 2007 when the Consolidated Loan Fund began its operations, and served as Board President from 1999 to 2013. Ray's leadership



throughout the years has proven to be instrumental in the success of the programs offered through RBF, Inc.

Board members and Regional Planning Commission staff thank him for his leadership, direction, and sense of humor.

Ray Hughes (left) receiving award from Board President Joel Kraemer

RBF, Inc. Business Spotlight



Photo courtesy DCA Manufacturing

DCA Manufacturing Corporation Cumberland, Barron County

The Regional Business Fund, Inc. recently provided assistance to DCA Manufacturing for an expansion. DCA is a subcontractor manufacturer, providing original equipment manufacturers with custom electric and electromechanical assemblies. Carl Proescholdt, President, and Julie Schnacky, CFO (pictured above) recognized the need for expansion as their sales steadily increased. The new expansion now affords DCA more than twice the floor space they previously had (from 8,600 to 22,600 square feet) and allows them to remain competitive and support the industry locally, while many manufacturers elect to outsource overseas.

DCA Manufacturing Corporation received a \$300,000 loan through the Revolving Loan Fund. The funds are being used to purchase equipment for the expansion. The business currently employs 67 (17 recently added for the expansion) and plans to add 20 positions within the upcoming years. Congratulations DCA!

RBF, Inc. Activity Report (2013) January - December

Loans Funded: 55

Total	Amount:	\$4,212,435
Jobs Created/Retained:	1,067	

--

Pending Loans: 7

Total Amount: \$626,300

Jobs Expected: 68

--

Pending Loan Applications: 8

Total Amount: \$583,500

Jobs Expected: 140

--

For more information contact:

Beth Waldhart bwaldhart@wcvrpc.org

Levi Wagner lwagner@wcvrpc.org



REGIONAL BUSINESS FUND, INC.

The West Central Wisconsin Regional Planning Commission is statutorily charged with the responsibility of planning for the physical, social, and economic development of the region. To accomplish this mission, the Commission conducts areawide planning and provides technical assistance to local governments.

800 Wisconsin Street, Suite D2-401

Mail Box 9

Eau Claire, WI 54703-3606

Phone: 715.836.2918

Fax: 715.836.2886

E-mail: wcvrpc@wcvrpc.org



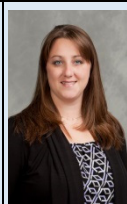
An innovative leader in responsible planning and development for over 40 years

coordinate. partner. advocate. serve.

WCWRPC Staff



Jay Tappen
Executive
Director



Jennifer
Ludwig
Loan Processor



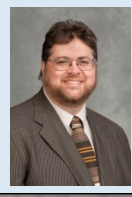
Ann Schell
Senior
Planner



Eric Anderson
Senior
Planner



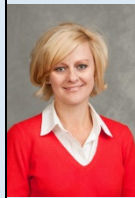
Esther Moen
Financial
Manager



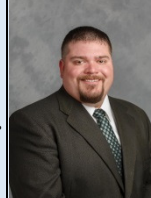
Chris Straight
Senior
Planner



Jing Duan
GIS
Coordinator/
Associate
Planner



Lynn Nelson
Senior Planner



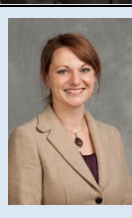
Levi Wagner
Lending
Specialist



Tobi LeMahieu
Assistant
Planner



Lisa K. Ruth
Office
Manager



Beth Waldhart
Fund Manager